

moore green
chartered accountants

A quality, efficient and professional service to suit your business
 Free initial consultation
Sudbury 01787 880066
 22 Friars Street, Sudbury, Suffolk, CO10 2AA
 website: www.mooregreen.co.uk
 email: mail@mooregreen.co.uk



Jonathan Lambert
 FINE JEWELLERS



2 Borehamgate, King Street, Sudbury, CO10 2EG
01787 881181
www.jonathanlambert.co.uk

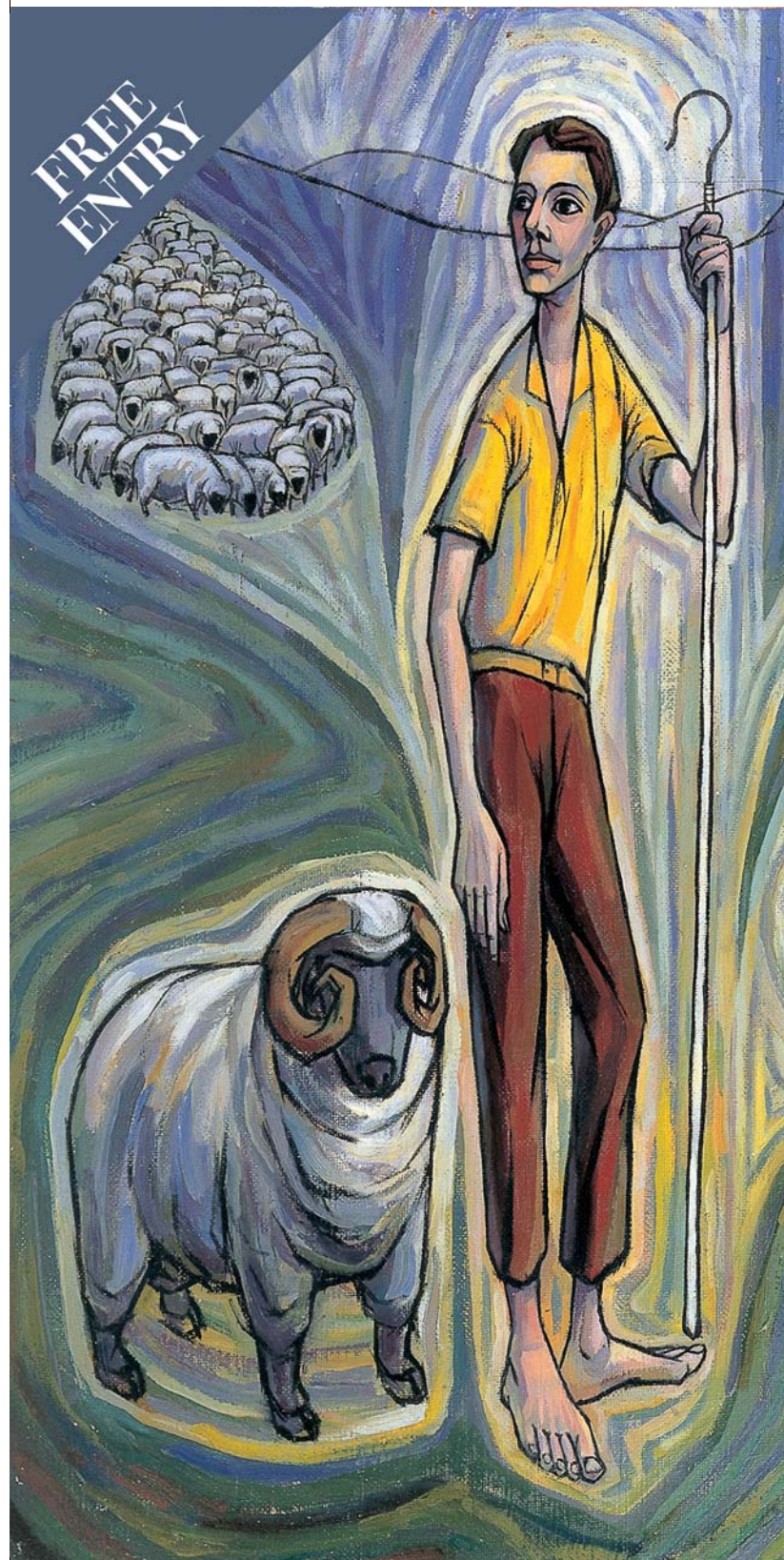


fashion for him ... for her for your home.

WINCH & BLATCH
 DEPARTMENT STORE MARKET HILL & KING ST SUDBURY
 SINCE 1945
www.winchblatch.co.uk 01787 373737



The BULL HOTEL - Long Melford
www.thebull-hotel.com
 The Bull Hotel, Hall Street, Long Melford, Sudbury, CO10 9JG. 01787 378494



ST PETER'S
 SUDBURY

THE METHODIST CHURCH COLLECTION OF MODERN CHRISTIAN ART

ART AND SOUL

16TH JULY -
 21ST AUGUST
 OPEN 7 DAYS
 10AM - 6PM

ART AND SOUL

THE METHODIST CHURCH COLLECTION OF MODERN CHRISTIAN ART

The Methodist Church Collection of Modern Christian Art is comprised of more than 50 paintings dating back to the turn of the 20th century. Depicting the life of Jesus Christ, this is a hard-hitting and evocative exhibition with examples of work from both devout Christians and non-Christian artists. It features some of Britain's and the world's finest artists including Graham Sutherland, Elizabeth Frink, Edward Burra and Patrick Heron.



This is one of the great Modern art collections and widely regarded as the finest collection of Modern Christian art outside of the Vatican. The exhibition is a rare opportunity to see the collection in its entirety and visitors are promised a moving experience that raises all sorts of questions. St Peter's presents a wonderful space to exhibit these extraordinary works of art with its fabulous light and town-centre location.



Pictures, top: Mark Cazalet, 'Fool of God (Christ in the Garden)', 1993. Bottom: Theyre Lee-Eliot, 'Crucified Tree Form - the Agony', 1959. Front: John Reilly, 'Cain and Abel', 1958 (detail).

The exhibition runs from Saturday 16th July until Sunday 21st August, 10am to 4pm, seven days a week. Admission is free of charge.

For more information contact:
graeme.garden@hotmail.co.uk
 01787 372087

To accompany the exhibition there will be a programme of CONCERTS, LECTURES and CHURCH SERVICES, including:

25th June, 7:30 £6.00 Salvation Army Citadel, Station Road
 CONCERT by the Cambridge Citadel Band

9th July, 7:30 £6.00 St John's Methodist Church
 CONCERT by St. John's Choir with Roger Green on the organ

16th July, 12:00 St Peter's
 OFFICIAL EXHIBITION OPENING by MAGGI HAMBLING

21st July, 7:30 £5.00 St Peter's
 WORKSHOP - 'WORD & IMAGE' The connection of 20th and 21st century calligraphy with the art collection - Susan Hufton (Fellow of the Society of Scribes and Illuminators)

14th August, 7:00 St John's Methodist Church
 ECUMENICAL CHURCH SERVICE - Preacher the Rev Dr the Lord Griffiths of Wesley's Chapel and Leysian Mission, London

16th August, 7:30 £8.00 St Peter's
 'IMPOSSIBLE GOD' a one-man passion play performed by Mark Topping

Every Sunday, 2:30 - 3:30, the exhibition will be accompanied by live music
 See local press and exhibition noticeboard for news of further events

Impossible God
The Passion Play
 The death and resurrection of Jesus
 as experienced by those who were there



IMPOSSIBLE GOD is a powerful exploration of the historical events at the heart of the Christian faith. This inspiring one-man play, written by Frank Topping, challenges us to look again at Jesus' life, death and resurrection. MARK TOPPING is a professional actor for TV and theatre. He has toured throughout England, Wales and Ireland for five years, performing as John Wesley.

The Methodist Church Art Collection in association with the churches of Sudbury.

The organisers wish to acknowledge the generous support of Suffolk County Council, Gainsborough's House and the Quay Theatre in facilitating the wide circulation of this document.